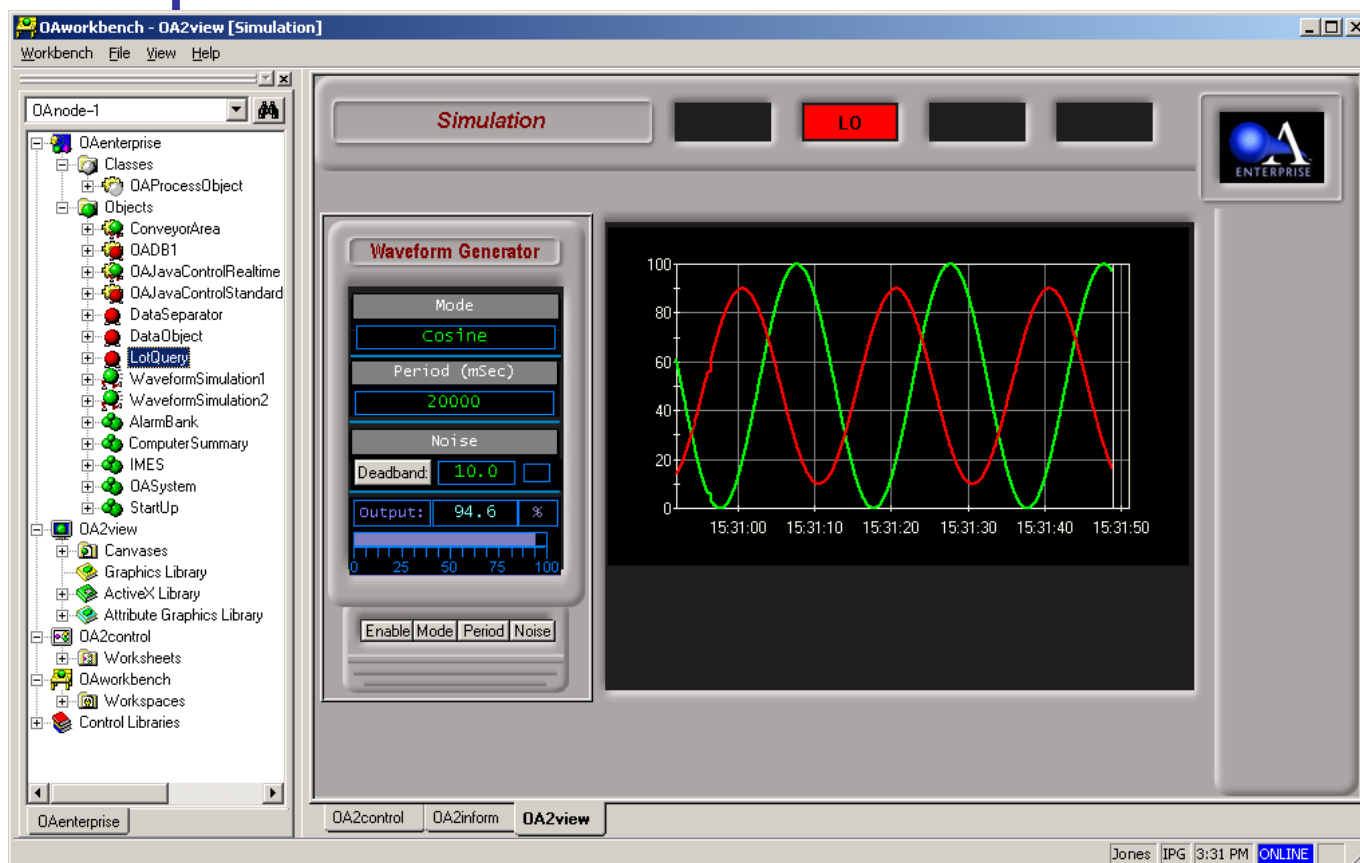




# ObjectAutomation's OAworkbench

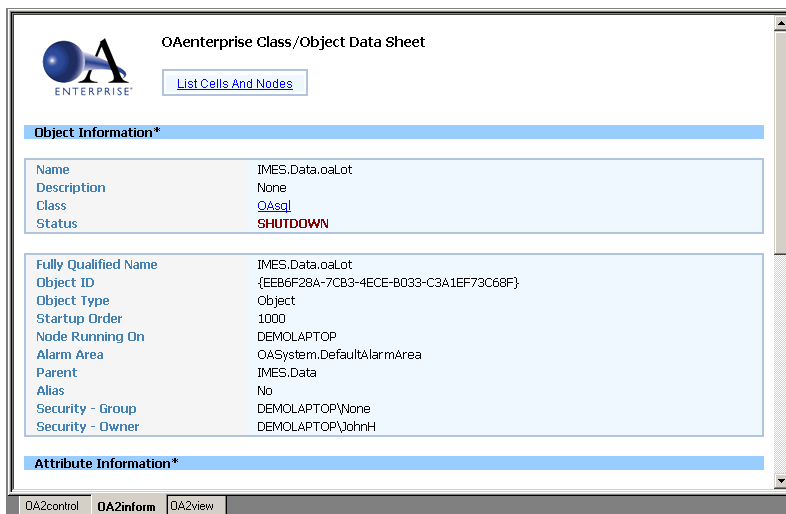
## User Interface, Help, and Document Management

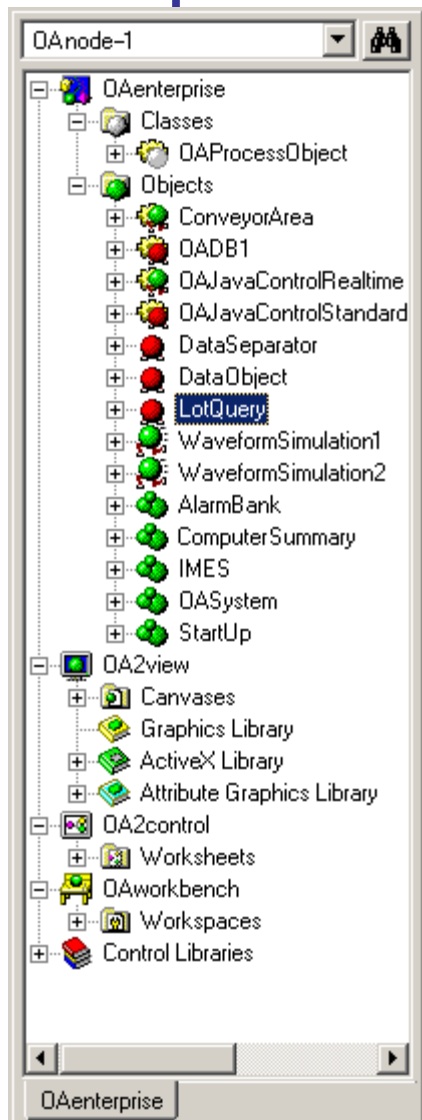
OAworkbench is the main user interface of OAenterprise. It has a browser style interface and represents an extensible, common automation console. OAworkbench is a container for ActiveX document objects or, in other words, a shell that serves as an interface to other components of OAenterprise. It also includes a comprehensive, online help utility.



OA2workbench consists of:

- **OA2browse**  
browser viewing the OAframework
- **OA2help**  
comprehensive online, extensible, HTML-based help.
- **OA2inform**  
OAenterprise's document management utility





## FUNCTIONS & FEATURES

### User Friendly Graphical User Interface

OA2browse is an easy to use, browser based user interface that enables users to browse the OAframework. It provides:

- Drag and drop support
- Right-click access to object properties
- Filtering of data through user defined queries.
- Extensibility through OA defined COM objects.

### Robust Document Management

OA2inform allows for the addition and viewing of documentation associated with classes:

- Receives context from OA2browse
- Standard HTML format
- Can house data sheets, specs, etc.
- Has web based connectivity

### Open, Microsoft Architecture

OAworkbench is a Microsoft Windows XP and Windows Server 2003 based application which allows for high degree of extensibility and scalability, as well as real-time, open connectivity within its architecture.

### Web-Enabled Integration and Connectivity

In addition to ODBC and OLE Automation, OAenterprise provides web access to all system data and configuration parameters through an integrated XML/SOAP server.

